

Walt Disney's Comics and Stories – Vol. 2 No. 1 (October 1941)

Summary of Observations

This early Golden Age issue is **structurally weakened but complete**, with both covers present and interior pages intact. The most significant condition issues are concentrated at the **spine and staple areas**, where extensive paper loss, tearing, and erosion have substantially compromised the book's binding integrity. Photo correlation confirms that the **front cover is partially detached from the interior block**, hanging by remaining paper continuity rather than secure staple engagement.

Inspection of the **centerfold together with the spine and staple photographs** confirms that **both original staples are present**, but they are **largely obscured by severe paper loss and delamination at the spine**. The staples remain embedded and visible at the centerfold, while the spine exterior no longer reliably reveals them due to material loss. Interior and centerfold pages show advanced oxidation, margin darkening, and creasing consistent with early-1940s newsprint, but **no full-thickness interior tears are clearly visible** in the photographed pages. Brittleness testing shows stiffness but continued fiber flexibility.

This issue holds **elevated historical and collector interest** as the **first issue of Volume 2**, featuring early wartime Donald Duck and Mickey Mouse material and an October 1941 cover immediately preceding U.S. entry into World War II, making it a notable early Dell Disney publication despite its condition.

Front Cover — Observations (IMG_1169)

Walt Disney's Comics and Stories – Vol. 2 No. 1 (October 1941)

Photo Condition & Quality

Clear, high-resolution image showing full cover, corners, edges, and spine edge.

Scene & Composition

Donald Duck leads Huey, Dewey, and Louie down a hallway marked "APT. FOR RENT ADULTS ONLY," carrying luggage labeled "**Slingers Midgets.**" Masthead reads *Walt Disney's Comics and Stories*. Issue text at right reads **October 1941 – Vol. 2 No. 1 – 10¢.**



Findings

- **Extensive paper loss and tearing along the spine edge**, with original spine stock missing across multiple segments.
- **Front cover partially detached from the interior block**, visible as separation along the spine when viewed in profile.
- **Irregular spine tears** exposing interior wraps.
- **Bottom-edge chipping** with several small paper losses near the spine corner.
- **Corner rounding and softening** on all corners, heavier at lower corners.
- **Surface abrasion and rub wear** across the red and yellow fields.

Color & Printing Quality

Colors remain strong but muted by abrasion and oxidation; linework remains bold.

Paper & Structural Notes

Paper shows advanced oxidation, particularly along exposed edges and spine. Structural attachment of the cover is weakened.

Overall Impression

Front cover remains present and visually striking but is **structurally compromised by spine erosion and partial detachment.**

Back Cover — Observations (IMG_1170)

Walt Disney's Comics and Stories – Vol. 2 No. 1 (October 1941)

Photo Condition & Quality

Clear image showing full back cover including subscription form.

Scene & Composition

Subscription advertisement titled **“Be Wise!”**, featuring an owl illustration and a mail-in form for *Walt Disney's Comics and Stories*.

Findings

- **General surface soiling and discoloration.**
- **Creasing through the central area of the page.**
- **Edge wear and thinning along the bottom margin.**
- **Corner rounding**, especially at the lower corners.

Color & Printing Quality

Colors muted but readable; text remains fully legible.



Paper Condition

Uniform tan oxidation; no moisture staining observed.

Overall Impression

Back cover remains intact with moderate handling wear.

Interior Pages — Observations (IMG_1171-IMG_1175)

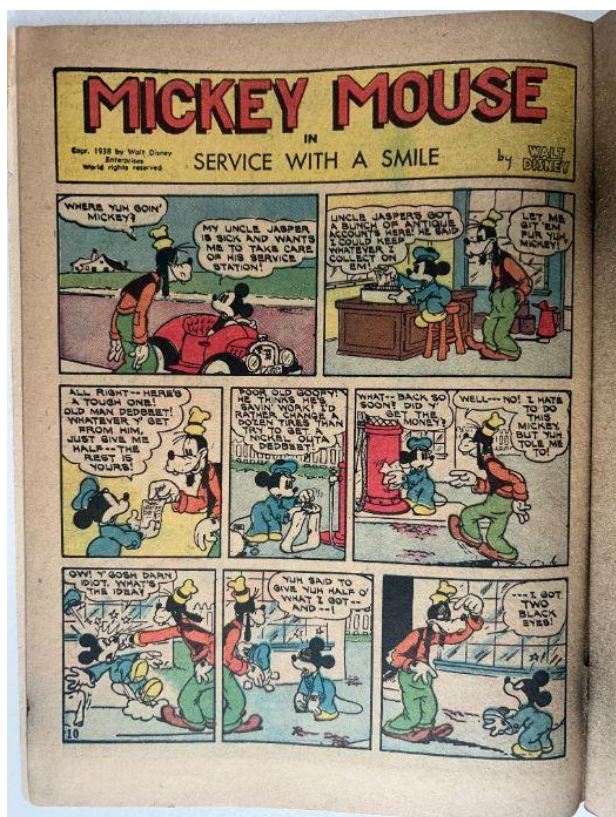
Walt Disney's Comics and Stories – Vol. 2 No. 1 (October 1941)

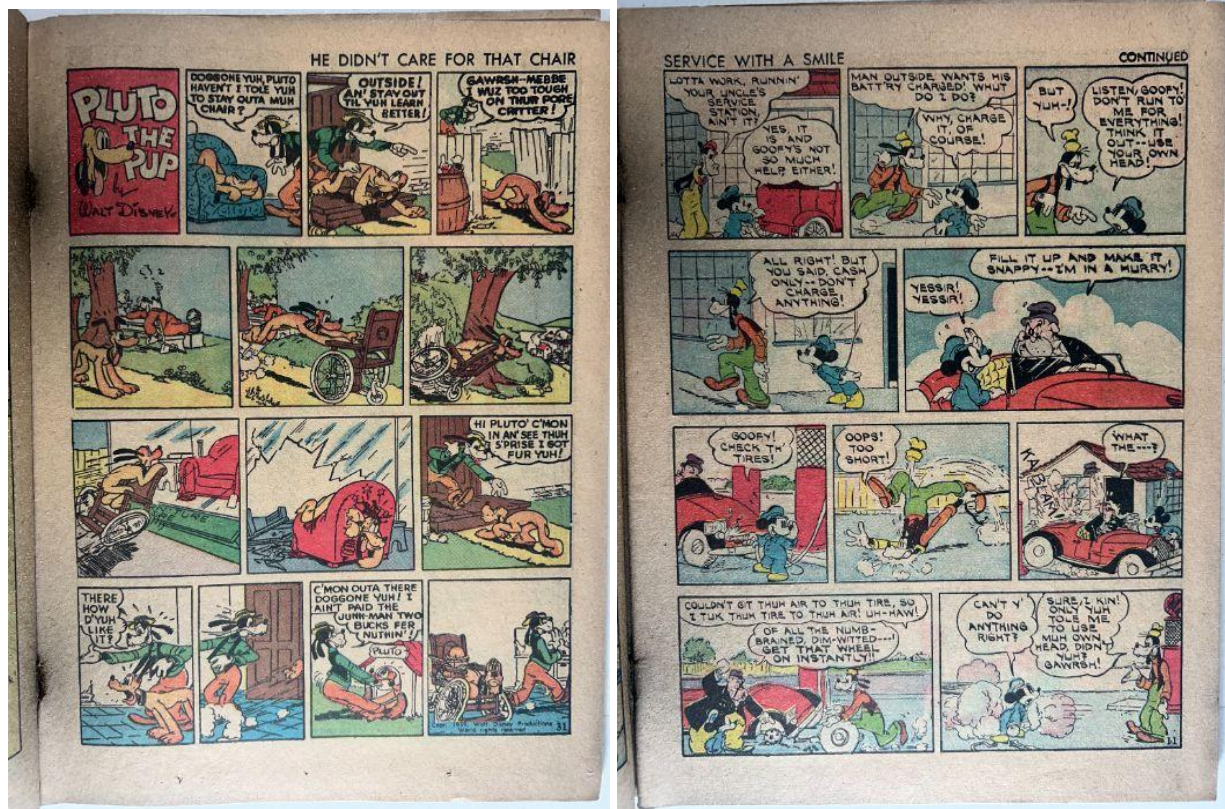
Photo Condition & Quality

Interior pages photographed clearly with margins and gutters visible.

Page Color

Tan to medium brown.





Findings

- **Advanced oxidation and margin darkening** throughout.
- **Corner creasing** at lower corners.
- Minor edge nicks consistent with age and handling.
- **No clearly visible full-thickness interior tears** in the photographed pages.

Color & Printing Quality

Colors softened but artwork remains clear and sharp.

Structural Notes

Pages remain aligned at the fold and attached to the staples.

Overall Impression

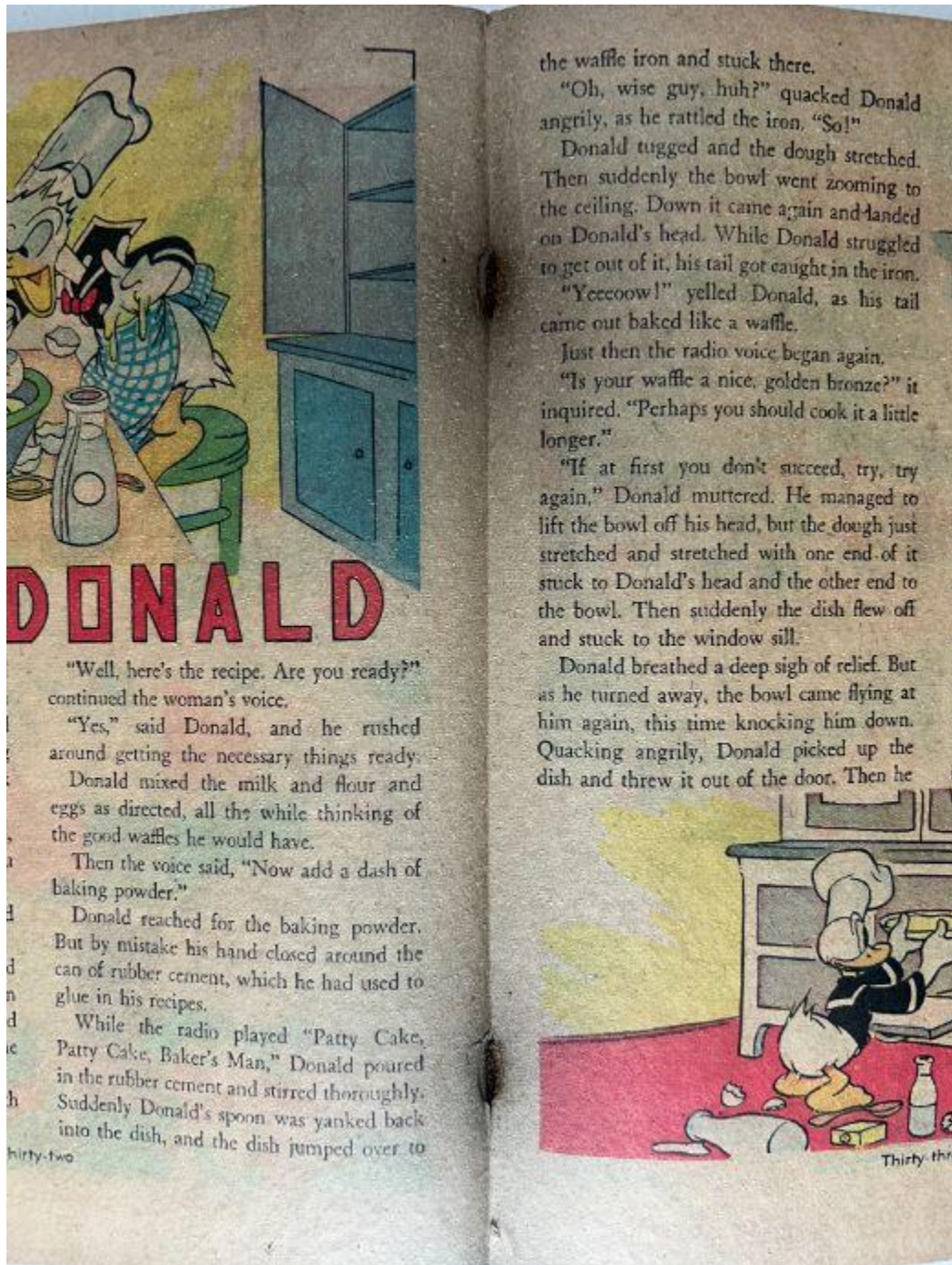
Interior pages show **heavy aging but remain structurally intact**.

Centerfold — Observations (IMG_1176)

Walt Disney's Comics and Stories – Vol. 2 No. 1 (October 1941)

Photo Condition & Quality

Clear two-page image showing gutter and staple alignment.



Findings

- **Both original staples visible at the centerfold.**
- Paper around fold shows darkening and stress.
- No full-thickness centerfold tears observed.

Overall Impression

Centerfold remains attached at both staple points despite surrounding fatigue.

Spine — Observations (IMG_1177)

Walt Disney's Comics and Stories – Vol. 2 No. 1 (October 1941)

Photo Condition & Quality

Side-profile image clearly showing severe spine erosion.



Findings

- **Original spine paper largely missing**, exposing inner wraps.
- **Layered delamination and tearing** along the entire spine height.
- Staples not reliably visible externally due to material loss.

Overall Impression

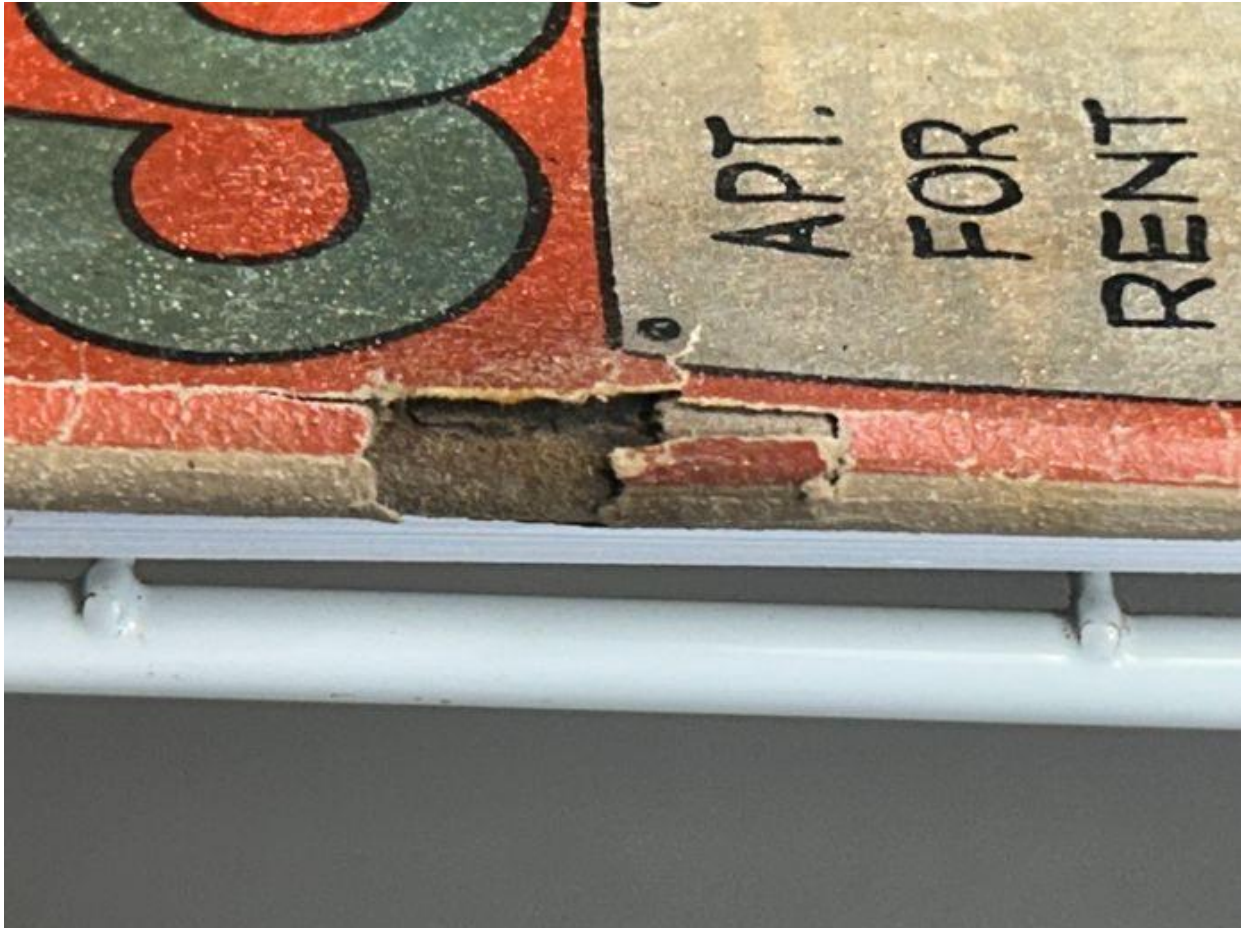
Spine integrity is **severely compromised by paper loss and tear-out.**

Upper Staple — Observations (IMG_1178)

Walt Disney's Comics and Stories – Vol. 2 No. 1 (October 1941)

Photo Condition & Quality

Macro image of upper staple region.



Findings

- **Upper staple present.**
- Surrounding paper is thinned and broken down from stress.

Overall Impression

Upper staple remains embedded but stressed by paper loss.

Lower Staple — Observations (IMG_1179)

Walt Disney's Comics and Stories – Vol. 2 No. 1 (October 1941)

Photo Condition & Quality

Clear close-range image of the lower staple area.



Findings

- **Lower staple present.**
- Paper surrounding the staple shows wear but no tear-out.

Overall Impression

Lower staple remains intact and functional.

Brittleness Test — Observations (IMG_1180)

Walt Disney's Comics and Stories – Vol. 2 No. 1 (October 1941)

Photo Condition & Quality

Clear macro image showing corner flex.



Findings

Paper flexes with stiffness but does not crack or flake.

Overall Impression

Paper shows advanced aging but is **not fully brittle**.

